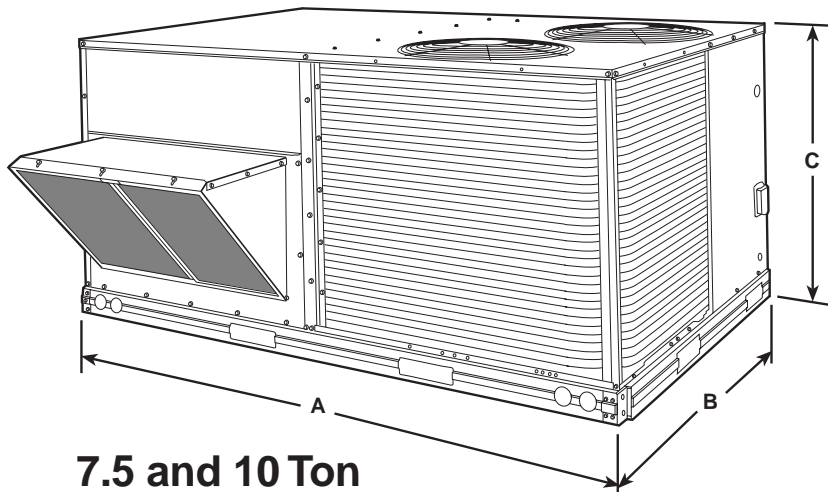
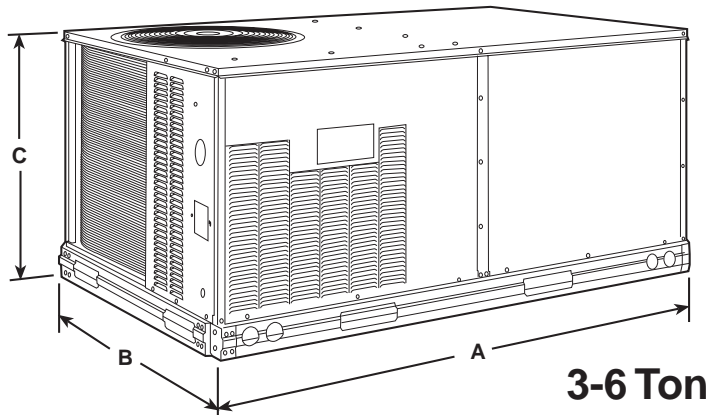


549B SOURCE GUIDE



TONNAGE	A	B	C
3-6	73 11/16	45	33 5/16
7.5	87 3/8	57 3/4	41 5/16
10	87 3/8	57 3/4	49 5/16

Note: All dimensions are in inches



549B High Efficiency Model Rooftop Heat Pump Units 3 - 10 Tons

Features

- One-Year Parts Warranty with Optional Extensions
- Five-Year Warranty on the Compressor
- Five-Year Warranty on Electric Heater Accessory
- Downflow to Horizontal Convertible for Curb or Slab Mounting
- Exclusive Cycle-LOC™ Anti-Compressor Cycle Protection
- Standard SEER's up to 13.0 EER's to 10.0
- Scroll Compressors with Internal Linebreak Overload Protection
- Single Compressor on 3-6 Ton Sizes
- Dual Compressor on 7-1/2 - 12-1/2 Ton Sizes
- Tool-Less Filter Access Door
- Copper Tube Aluminum Fin Coils with Optional Corrosion Resistant Coils
- Refrigerant Filter Drier
- Low-Pressure/Loss of Charge, Freeze Protection, and High-Pressure Switches
- Fully Insulated Cabinet
- Prepainted Exterior and Primer Coated Interior Panels Tested to 500 Hour Salt Spray Protection
- Belt Drive Evaporator-Fan Motors with Adjustable Pulleys
- Permanently Lubricated Evaporator Fan Motor
- Acutrol™ Refrigerant Metering System
- Single Point Electric Connections
- Thru-the-Bottom Power Entry Capability
- Two-Inch Disposable Return Entry Filters
- 24-Volt Control Circuit Protected with Resettable Circuit Breaker
- Exclusive Non-Corrosive, Composite Condensate Pan in Accordance with ASHRAE 62-Standard, Sloping Design. Provides Side or Center Drain
- Automatic Changeover when used with Auto-Changeover Thermostat
- Low Outdoor Temperature Cooling Operation to 24 F
- Condenser Motors are Totally Enclosed with Permanently Lubricated Bearings
- Full Perimeter Heavy Gauge Base Rail with Built-In Rigging Adapters and Fork Truck Slots
- Run Tested with Performance Printout Provided with Each Unit

**SIZING AND
SELECTION CHART**

CAPACITY RATINGS

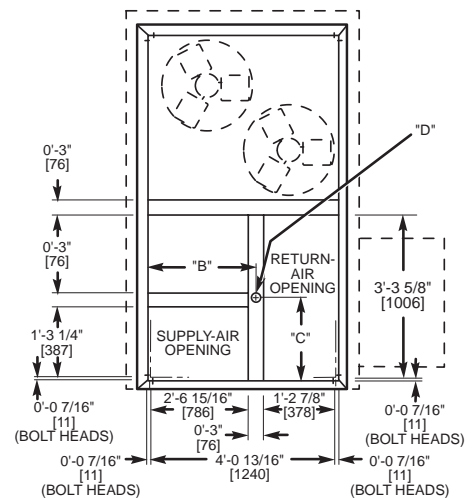
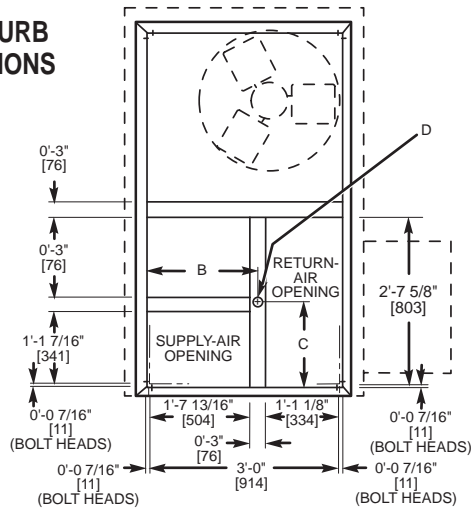
UNIT 549B	NOMINAL TONS	STANDARD CFM	COOLING		HEATING (High Temp)			SOUND RATING (Bels)	OPERATING WEIGHT (Lbs.)
			Cap. (Btuh)	SEER†	Cap. (Btuh.)	COP	HSPF		
036	3	1200	36,000	12.0	34,000	3.4	7.2	7.6	490
048	4	1600	45,000	12.0	46,000	3.2	7.2	7.6	500
060	5	2000	59,000	11.7	60,000	3.4	7.8	8.0	520

UNIT 549B	NOMINAL TONS	STANDARD CFM	COOLING		HEATING (High Temp)		HEATING (Low Temp)		SOUND RATING (Bels)	IPLV	OPERATING WEIGHT (Lbs.)
			Cap. (Btuh)	EER	Cap. (Btuh)	COP	Cap. (Btuh)	COP			
072	6	2400	69,000	9.75	72,000	3.4	36,000	2.0	8.0	-	520
090	7 1/2	3000	88,000	10.0	87,000	3.2	53,000	2.2	8.2	10.8	840
120	10	4000	116,000	10.0	110,000	3.3	64,000	2.1	8.4	10.4	940

LEGEND

- Bels** — Sound Levels (1 bel = 10 decibels)
- Cap.** — Net Capacity (Btuh)
- COP** — Coefficient of Performance
- EER** — Energy Efficiency Ratio
- HSPF** — Heating Seasonal Performance Factor
- IPLV** — Integrated Part-Load Value
- SEER** — Seasonal Energy Efficiency Ratio
- †Applies only to units with capacity of 60,000 Btuh or less.

ROOF CURB DIMENSIONS





residential/ hvac commercial



[residential hvac](#) / [commercial hvac](#) / [about us](#) / [what's new](#)

Welcome to Barker Mechanical Services Inc. Our HVAC firm has been serving the San Francisco Bay Area for over 50 years and provides residential and commercial air conditioning and heating installation, maintenance and repair.

We look forward to serving your heating & cooling needs!

Joe Barker, President

6800 Sierra Court Suite L
Dublin, CA 94568

925-560-0280 phone
925-560-0288 fax

info@barkermech.com email