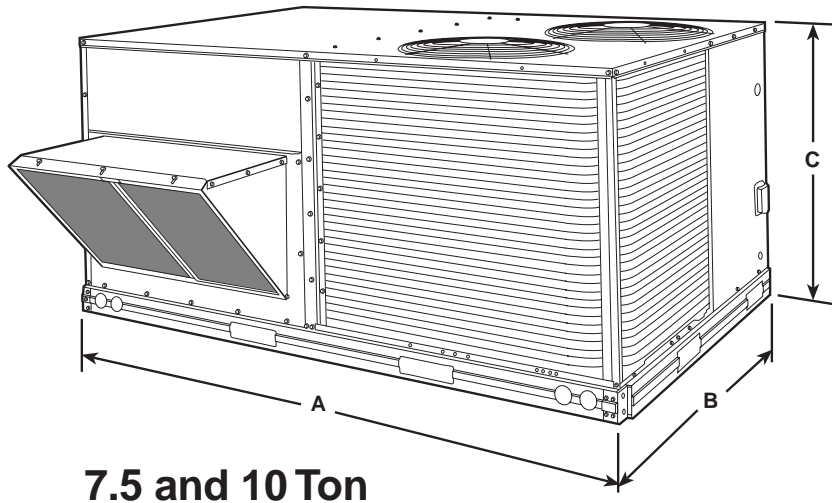
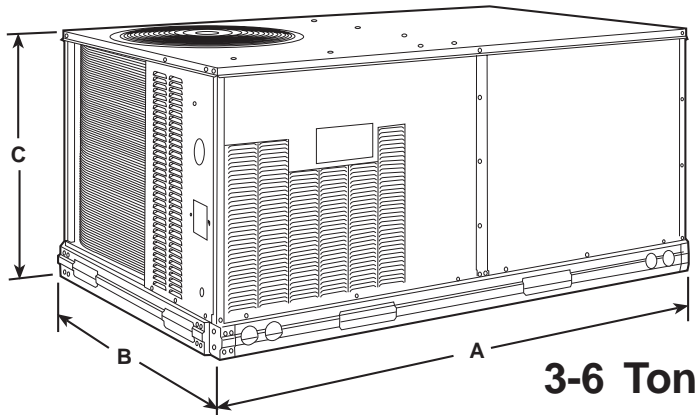


551B SOURCE GUIDE



TONNAGE	A	B	C
3-6	73 11/16	45	33 5/16
7.5 - 8.5	87 3/8	57 3/4	41 5/16
10 - 12.5	87 3/8	57 3/4	49 5/16

Note: All dimensions are in inches



551B High Efficiency Electric/Electric Roof Top Units 3 - 12.5 Tons

Features

- One-Year Parts Warranty with Optional Extensions
- Five-Year Warranty on the Compressor
- Five-Year Warranty on Electric Heater Accessory
- Downflow to Horizontal Convertible for Curb or Slab Mounting
- Exclusive Cycle-LOC™ Anti-Compressor Cycle Protection
- Standard SEER's up to 13.0 EER's to 11.0
- Scroll Compressors with Internal Linebreak Overload Protection
- Single Compressor on 3-6 Ton Sizes
- Dual Compressor on 7-1/2 - 12-1/2 Ton Sizes
- Tool-Less Filter Access Door
- Copper Tube Aluminum Fin Coils with Optional Corrosion Resistant Coils
- Refrigerant Filter Drier
- Low-Pressure/Loss of Charge, Freeze Protection, and High-Pressure Switches
- Fully Insulated Cabinet
- Prepainted Exterior and Primer Coated Interior Panels Tested to 500 Hour Salt Spray Protection
- Belt Drive Evaporator-Fan Motors with Adjustable Pulleys
- Permanently Lubricated Evaporator Fan Motor
- Acutrol™ Refrigerant Metering System
- Single Point Electric Connections
- Thru-the-Bottom Power Entry Capability
- Two-Inch Disposable Return Entry Filters
- 24-Volt Control Circuit Protected with Resettable Circuit Breaker
- Exclusive Non-Corrosive, Composite Condensate Pan in Accordance with ASHRAE 62-Standard, Sloping Design. Provides Side or Center Drain
- Automatic Changeover when used with Auto-Changeover Thermostat
- Low Outdoor Temperature Cooling Operation to 24 F
- Condenser Motors are Totally Enclosed with Permanently Lubricated Bearings
- Full Perimeter Heavy Gauge Base Rail with Built-In Rigging Adapters and Fork Truck Slots
- Run Tested with Performance Printout Provided with Each Unit

**SIZING AND
SELECTION CHART**

551B ELECTRIC/ELECTRIC

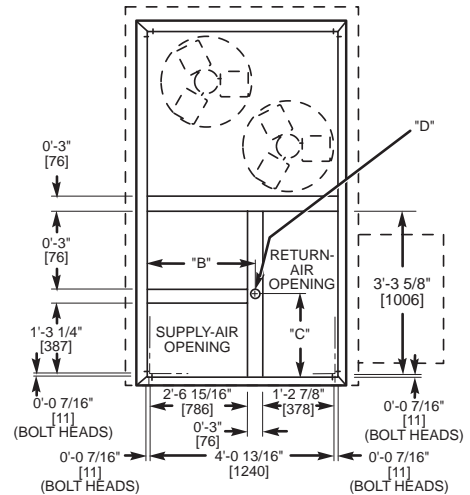
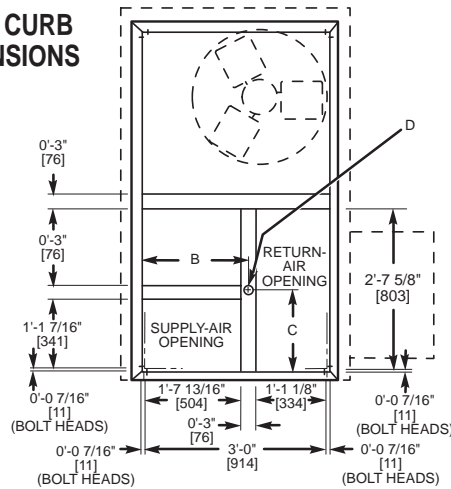
MODEL NUMBER	NOMINAL TONS	NET COOLING BTUH	*SEER/EER	STANDARD CFM	EVAPORATOR MOTOR TYPE	SOUND RATINGS (Bels)	OPERATING WEIGHT (Lbs.)
551B036	3	36000	13	1200	BELT	7.6	469
551B048	4	47000	13	1450	BELT	7.6	479
551B060	5	60000	13	1750	BELT	8	499
551B072	6	74000	11	2100	BELT	8	554
551B090	7.5	90000	11	3000	BELT	8.2	799
551B102	8.5	102000	10.8	3000	BELT	8.2	804
551B120	10	120000	11	3200	BELT	8.4	959
551B150	12.5	140000	9.9	4300	BELT	8.6	974

*SEER for 3-5 Tons, all others rated at EER.
Operating weights include Durablade Economizer.

LEGEND

Bels — Sound Levels (1 bel = 10 decibels)
EER — Energy Efficiency Ratio
SEER — Seasonal Energy Efficiency Ratio

**ROOF CURB
DIMENSIONS**





Bookmarks Location: <http://www.barkermech.com/index2.htm>

What's Related



residential/ hvac commercial



[residential hvac](#) / [commercial hvac](#) / [about us](#) / [what's new](#)

Welcome to Barker Mechanical Services Inc. Our HVAC firm has been serving the San Francisco Bay Area for over 50 years and provides residential and commercial air conditioning and heating installation, maintenance and repair.

We look forward to serving your heating & cooling needs!

Joe Barker, President

6800 Sierra Court Suite L
Dublin, CA 94568

925-560-0280 phone
925-560-0288 fax

info@barkermech.com email